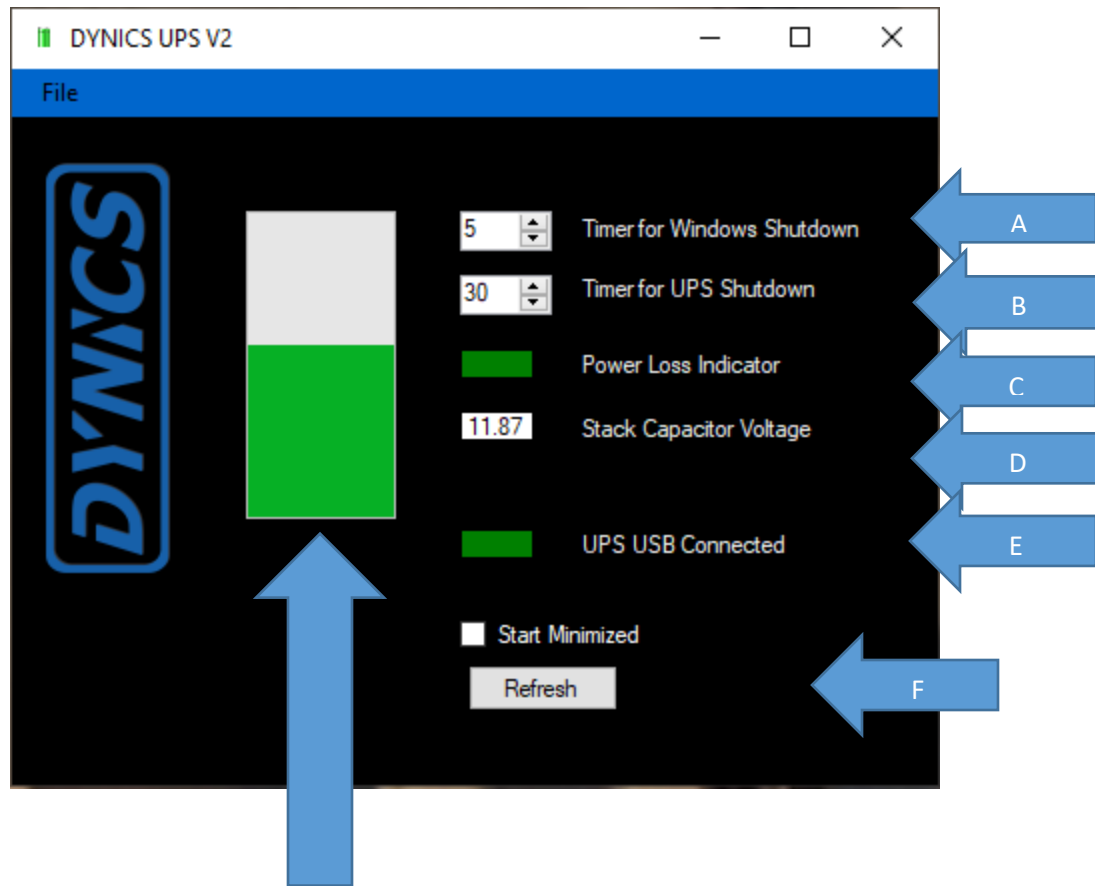


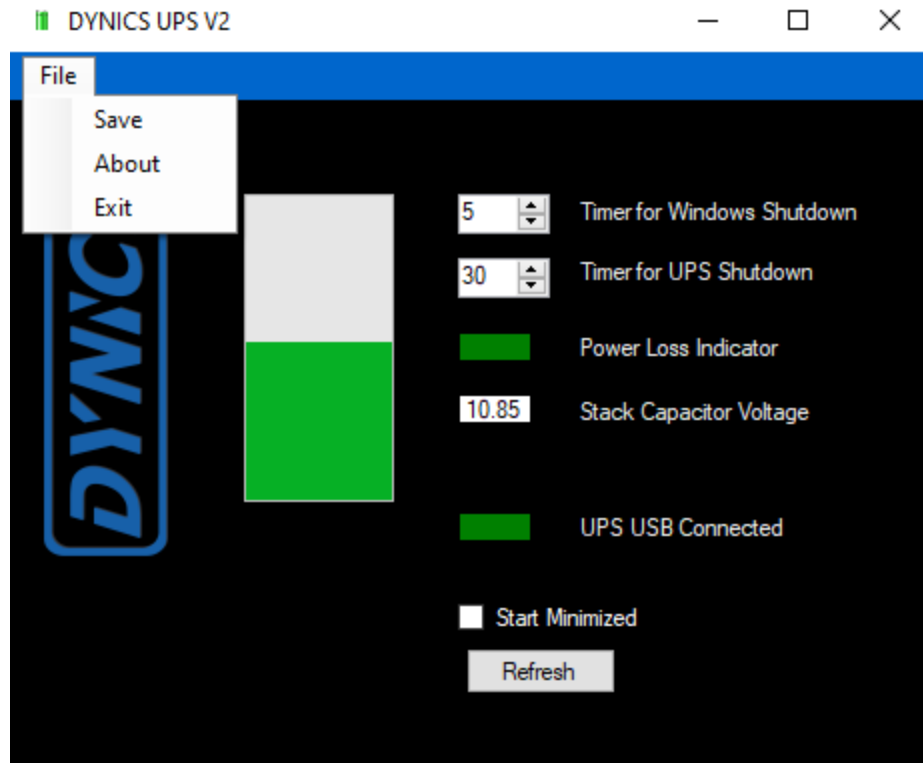
DYNICS UPS6000 Software User-Guide



“Green of Battery” is the Amount of charge in the UPS (currently not fully charged)

The above figure shows the various components of the DYNICS UPS V2 Software. The figure shows that the UPS is charged half way. NOTE: default values are displayed in image.

- A. You can adjust the Timer for windows to Shutdown in seconds. When the power goes out, the Windows OS will Automatically shut down after the set Timer in seconds.
- B. This Timer allows you to set a Timer for the UPS to Shutdown (turns off output) after a power loss event. You can adjust this Timer. This allows for the PC to automatically turn on when power is re-applied as the OUTPUT toggles from OFF to ON.
- C. The “Power Loss Indicator” is green when there is Power and turns red when there is Power loss.
- D. This Field shows the Capacitor Stack Voltage. The UPS6000 Charges to approximately 20.5V when fully charged (NOTE: This will vary slightly from unit to unit).
- E. The “UPS USB Connected” turns green when USB is connected and recognized. This indicator will turn red when the USB is disconnected or there is a communication issue between the UPS and the PC.
- F. “Refresh” Button will RESTART the Windows UPS Service and is requested from time to time.



1. The File Menu has an option to 'Save' the configuration settings. This will save the current values in the two Timer fields. Perform this save if values have been changed.
 - a. NOTE: Windows Service REQUIRES this be performed if values are manually changed.
2. The File Menu has an option for "About." Clicking this will display a small pop-up window with basic current UPS information including:
 - a. Dynics UPS Application Version
 - b. Dynics UPS Service Version
 - c. Dynics UPS Firmware Version
 - i. Queries the firmware version flashed to the UPS

Refer to image below for example.

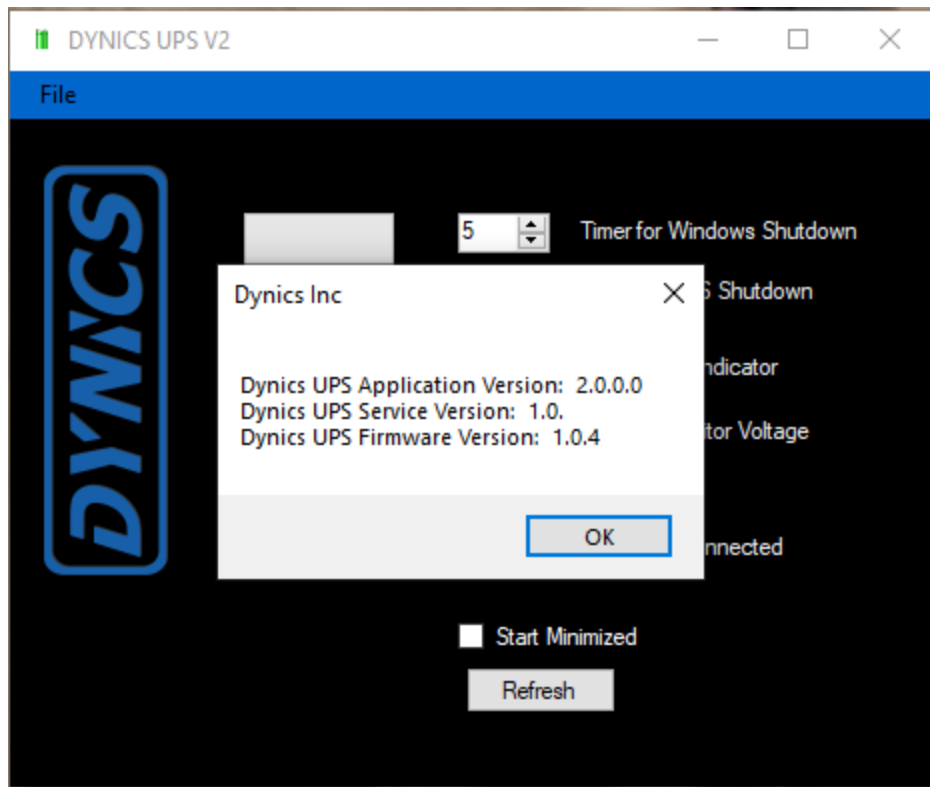


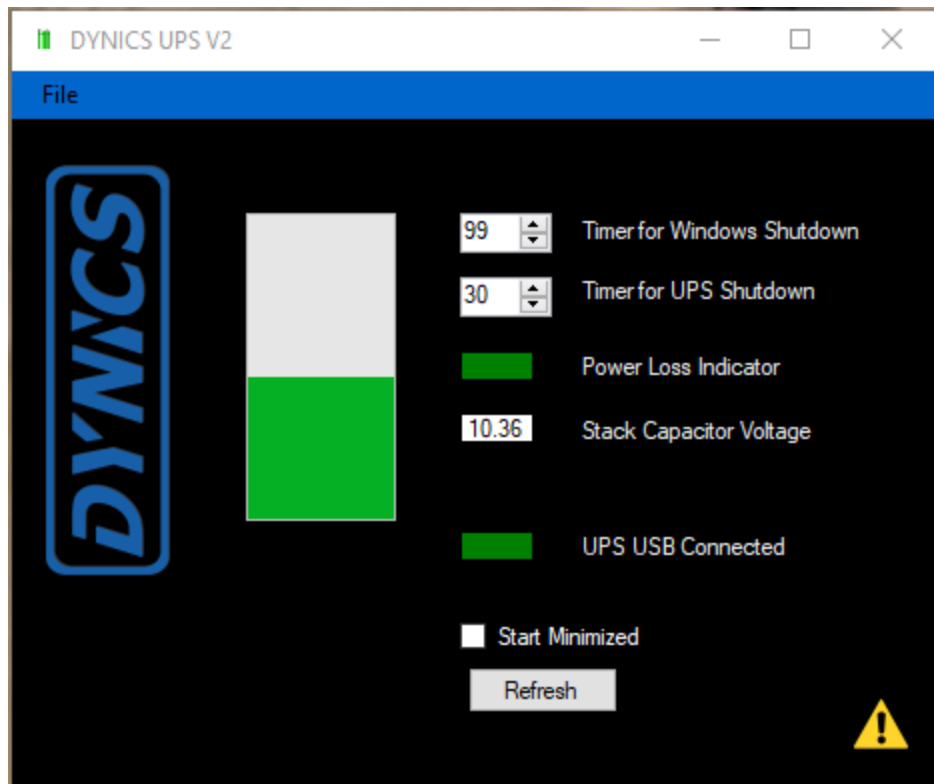
IMAGE "About" Window



This is the Icon for the UPS software that will display in the Windows Tray when the GUI is running and has been minimized. You can "Right Click" on this icon to close the software.

NOTE: If the GUI has been closed the UPS Service will continue to monitor for power loss using the last saved values from the "File >> Save" routine within the UPS V2 GUI.

NOTE: DYNICS UPS V2 is backwards compatible with the older UPS3500, however, V1.1 will not work with the new UPS6000.



From time to time a “Warning/Caution” symbol will be displayed in the GUI. Not to worry. This simply indicates: (click this yellow ICON for more information regarding the occurrence)

- A. That the refresh button needs to be pressed
- B. That a setting or Timer has been set to a value outside of the standard recommended values.
 - a. Example: as above. “Timer for Windows Shutdown” is currently set to 99 seconds. When clicked, the caution symbol displays a pop-up stating:

